



GMT MONTHLY MEMBERSHIP PROGRESS REPORT

Results as of: 9/30/2017

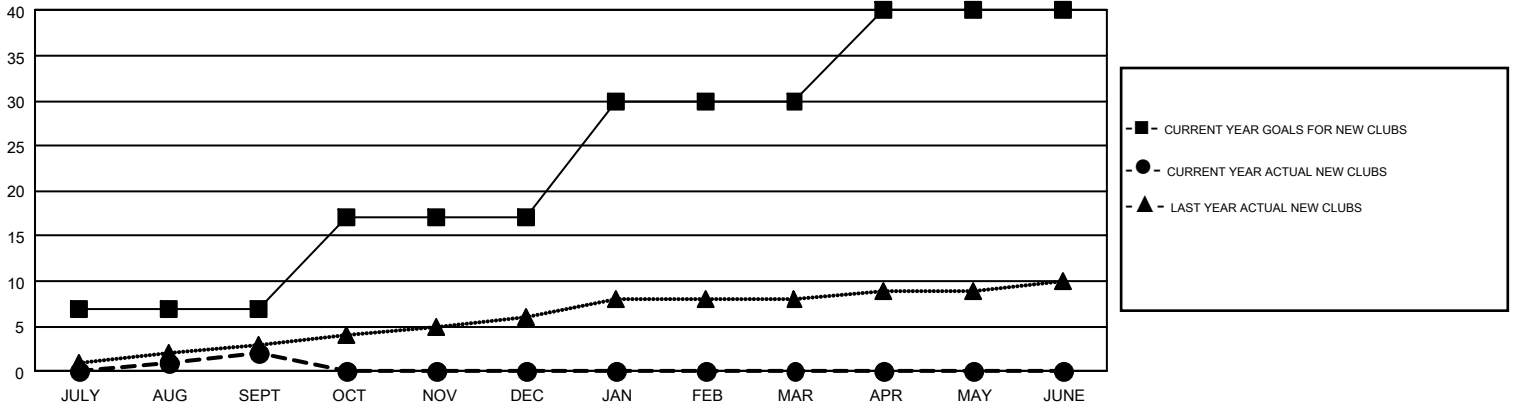
GMT Constitutional Area 1, Group D

GMT: MICHAEL MOLEND A

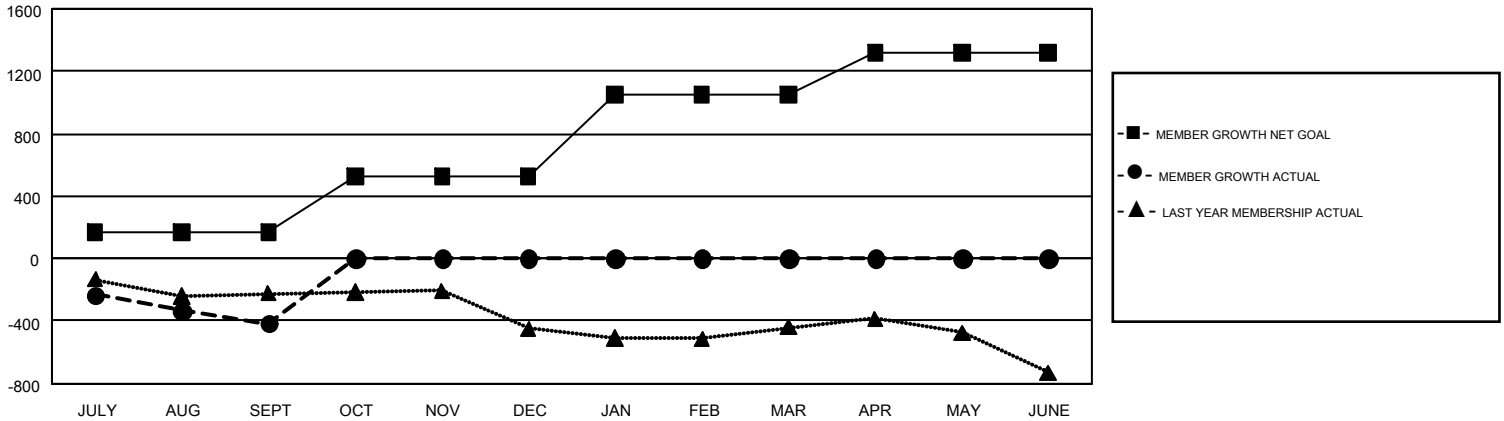
REPORT DOES NOT INCLUDE CLUBS IN UNDISTRICTED AREAS.

Clubs				Members			
RESULTS FOR 2017-2018				RESULTS FOR 2017-2018			
QUARTER	NEW CLUB GOAL	NEW CLUBS	DROPPED CLUBS	QUARTER	MEMBER GROWTH NET GOAL	MEMBER GROWTH ACTUAL	DROPPED MEMBERS ACTUAL (including transfers)
JULY/AUG/SEPT	7	2	5	JULY/AUG/SEPT	169	828	1,243
OCT/NOV/DEC	10	0	0	OCT/NOV/DEC	355	0	0
JAN/FEB/MAR	13	0	0	JAN/FEB/MAR	528	0	0
APR/MAY/JUNE	10	0	0	APR/MAY/JUNE	266	0	0

GOALS AND ACTUAL NEW CLUBS CUMULATIVE



GOALS AND ACTUAL MEMBERS CUMULATIVE



DROPPED CLUBS: 5	403 CLUBS OF 1,529 ADDED 1 OR MORE NEW MEMBERS	GENDER DISTRIBUTION MALE 35,964 (74.71%) FEMALE 12,174 (25.29%)
DROPPED MEMBERS DECEASED 167 CLUB CANCELLED 0 OTHER 1,076 <hr/> TOTAL 1,243	CLICK HERE FOR CUMULATIVE MEMBERSHIP DATA	TOTAL FAMILY UNIT MEMBERS 9,260 FAMILY MEMBERS PAYING HALF DUES 4,699